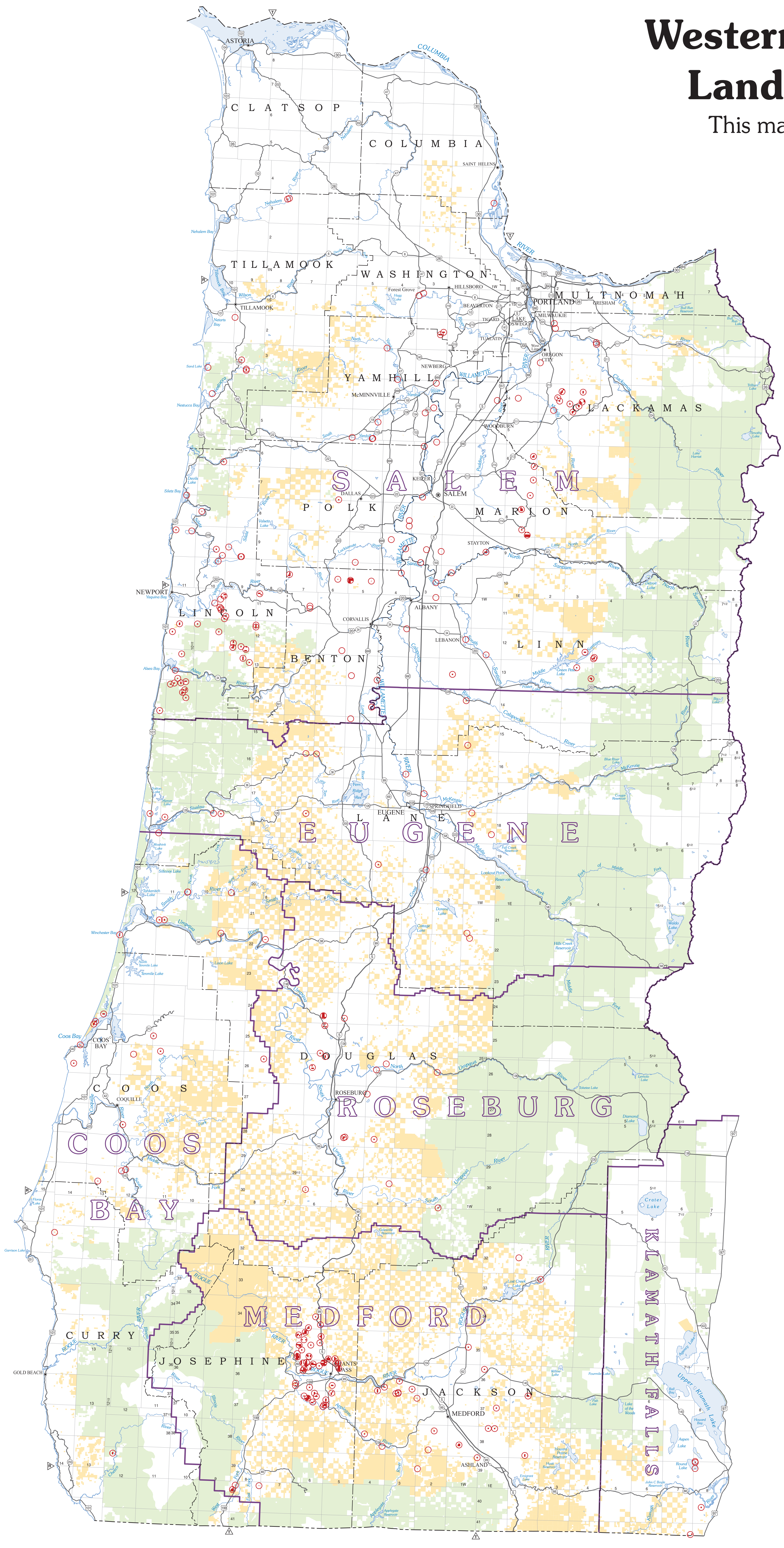


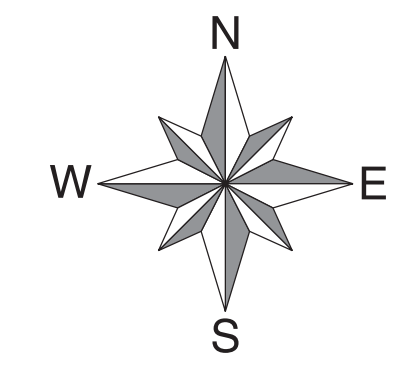
# Western Oregon Forestry Land Tenure, Zone 3

This map prepared at the request of  
Senator Ron Wyden  
September 6, 2013

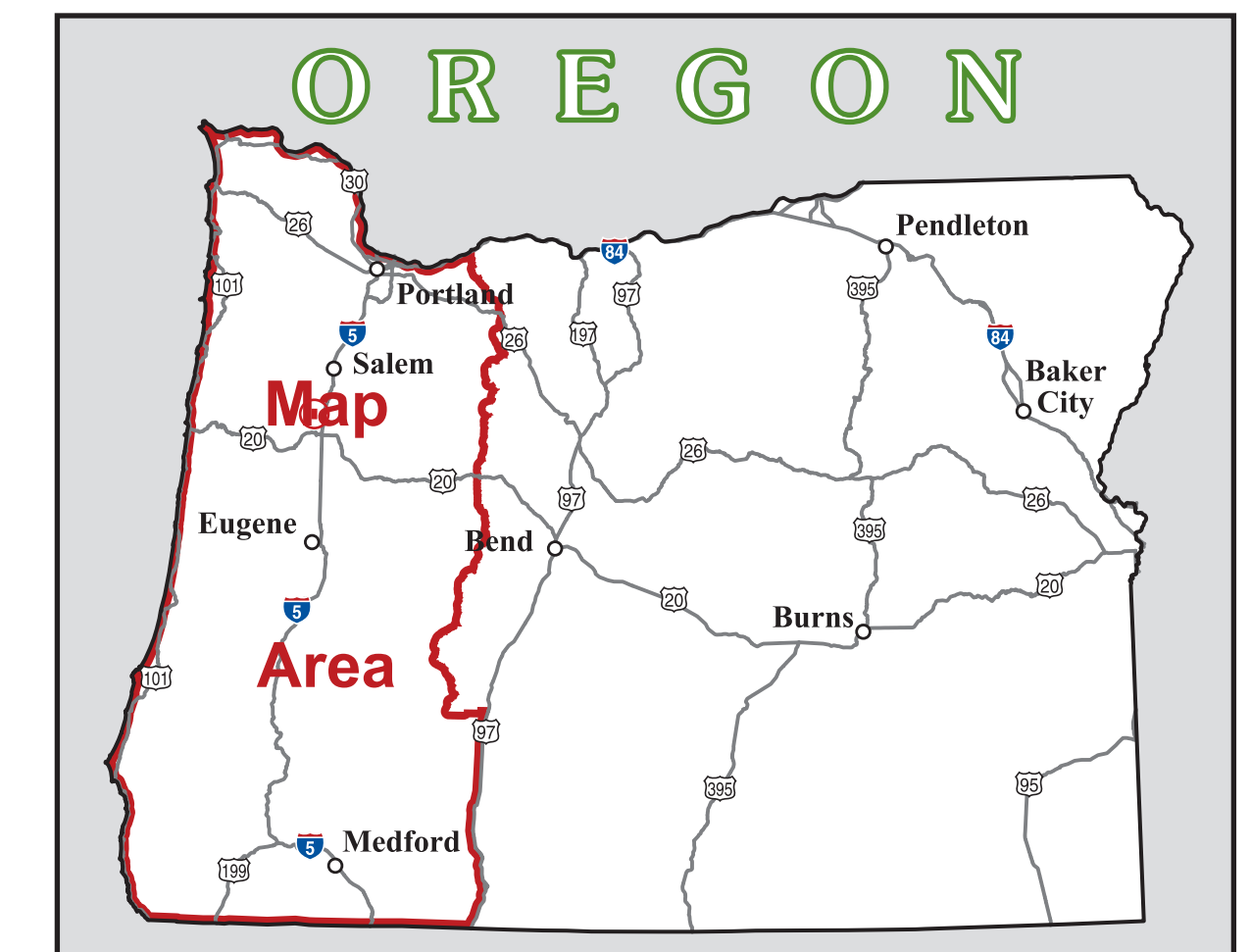
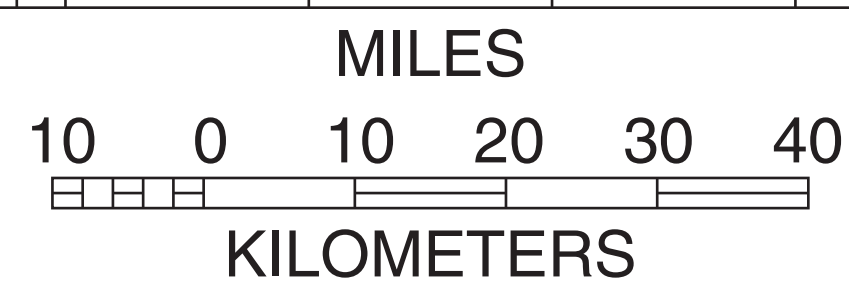


## LEGEND

- State Capitol
- County Seat
- City or Town
- Township; Range Number Locator
- Interstate Highway
- Federal Highway
- State Highway
- State Boundary
- County Boundary
- BLM Administrative Boundary
- U.S. Public Lands Survey; Range, Township
- Land Tenure, Zone 3
- Other BLM Lands
- US Forest Service Administered Land



1: 500,000  
when plotted at 34x44



No warranty is made by the Bureau of Land Management as to the accuracy, reliability, or completeness of these data for individual or aggregate use with other data. Original data were compiled from various sources. This information may not meet National Map Accuracy Standards. This product was developed through digital means and may be updated without notification.